

Inverter Operation Guide

Axpert VM III Off-Grid Inverter 1.5KVA/3KVA/5KVA



Contents

01

Scenario

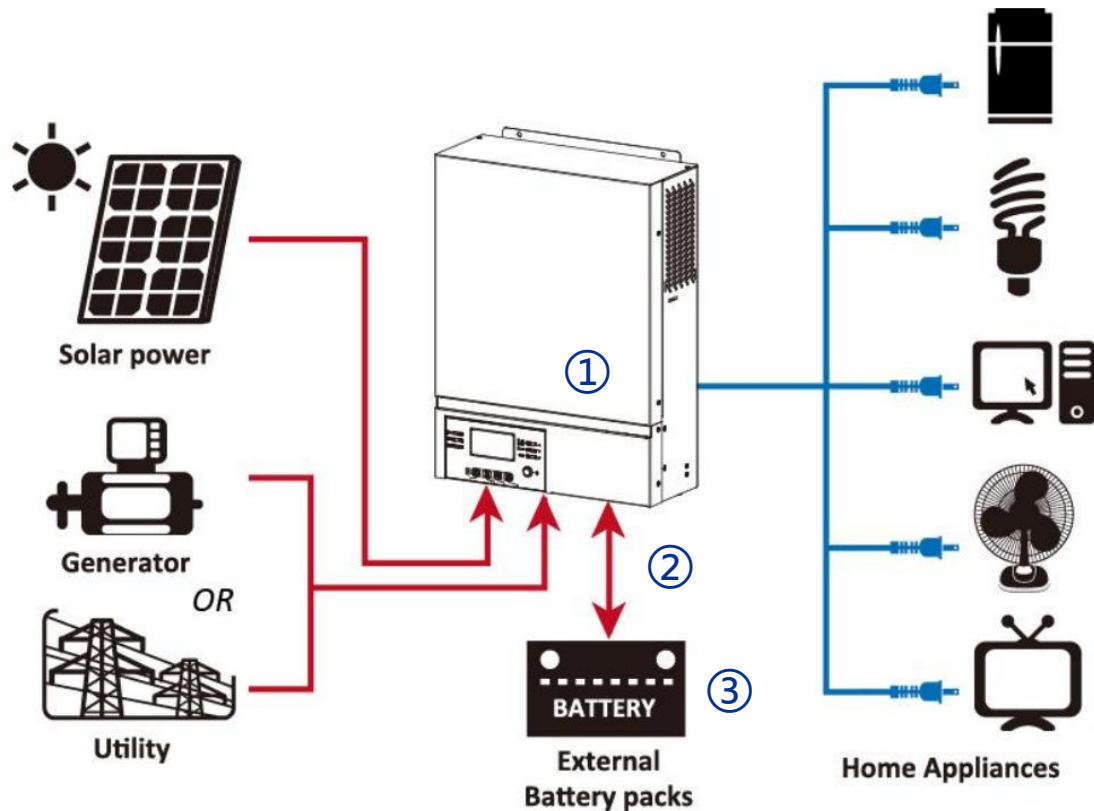
02

Connection

03

Configuration

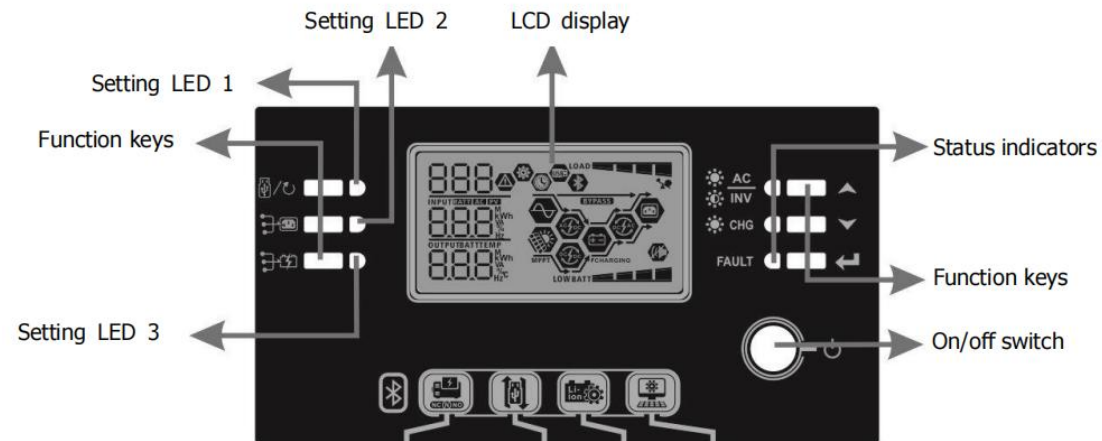
Simple home storage scenario



Key elements

- ① **Inverter** : Axpert VM III Off-Grid Inverter 1.5KVA/3KVA/5KVA
- ② **Interconnection cable** : Customized communication cable
- ③ **Battery** : The Li-ion Battery Pack composed of 16 strings of cells

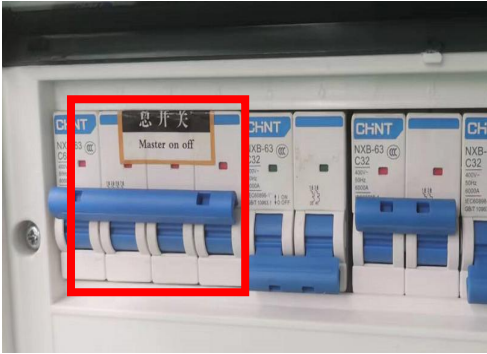
PCS Control Panel



Indicators

LED Indicator	Color	Solid/Flashing	Messages
Setting LED 1	Green	Solid On	Output powered by utility
Setting LED 2	Green	Solid On	Output powered by PV
Setting LED 3	Green	Solid On	Output powered by battery
Status indicators	AC INV	Solid On	Output is available in line mode
		Flashing	Output is powered by battery in battery mode
	CHG	Solid On	Battery is fully charged
		Flashing	Battery is charging.
FAULT	Red	Solid On	Fault mode
		Flashing	Warning mode

Matching Setting of Inverter and BMS-1



①

- Check system connection conforms
- **Turn on** the AC power switch



②

- Close the inverter switch;
- After checking the normal operation of the AC mains (frequency: 50Hz/60Hz, voltage range: 170V~280V (for PCs), 90~280V (for Home Appliances)), enter the system settings;

Matching Setting of Inverter and BMS-2



③

Long press “↵” to enter system settings



⑤

Press the key“▲ / ▼” to find option 11, press the key“↵”, and then press the key“▲ / ▼” to set the current value. Press the key“↵” to confirm;



④

Press the key“▲ / ▼”to find option 5, press the key“↵”, then press the key “▲ / ▼”to set the mode to L1b, and press the key“↵” to confirm



⑥

Press the key “↻” to return to the Home screen and complete the setting.